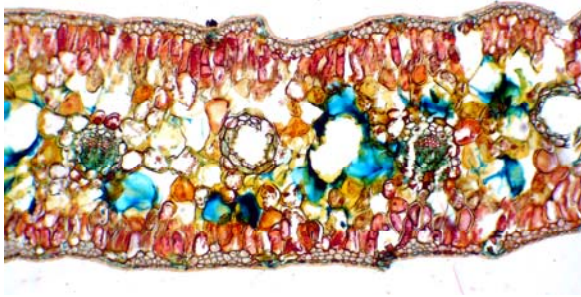
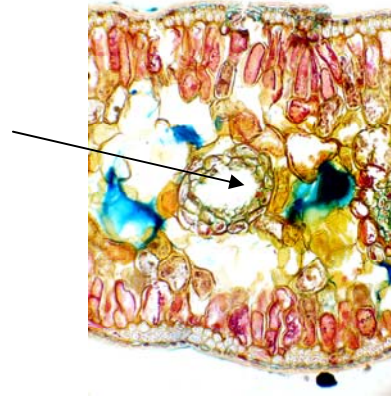


MARCH MICROSCOPE MEETING

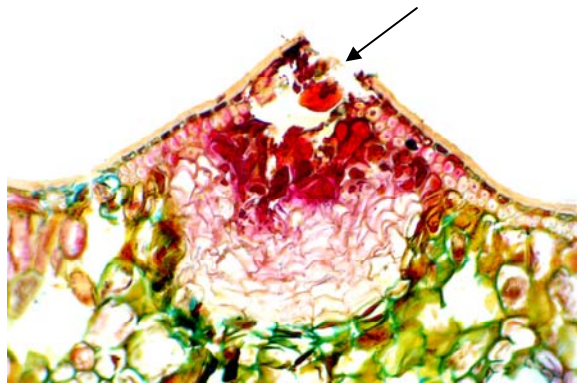
The leaf of the Monkey Puzzle had a number of interesting features, in particular, the very thick cuticle, the sunken stomata and the resin canals.



Monkey Puzzle Leaf T.S.

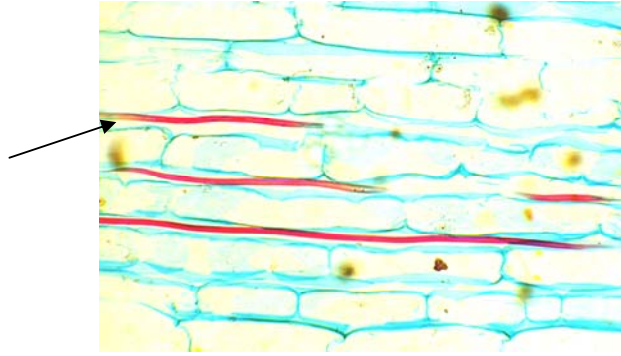


Monkey Puzzle Leaf -
Resin Canal

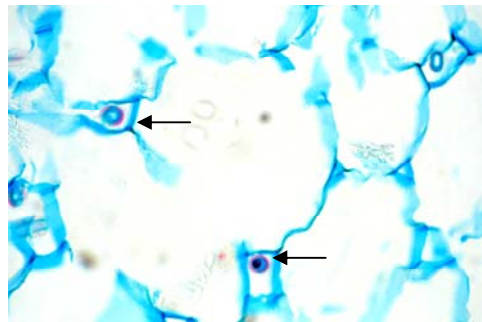


Monkey Puzzle Leaf - Fungus Infection (Uromyces)

Examination of the Swiss Cheese Plant aerial root sections solved the problem of the tiny "holes" we had observed in hand cut transverse sections of the root in January. These were not "holes" they were randomly scattered sclerenchyma fibres which showed up to perfection in the longitudinal section.

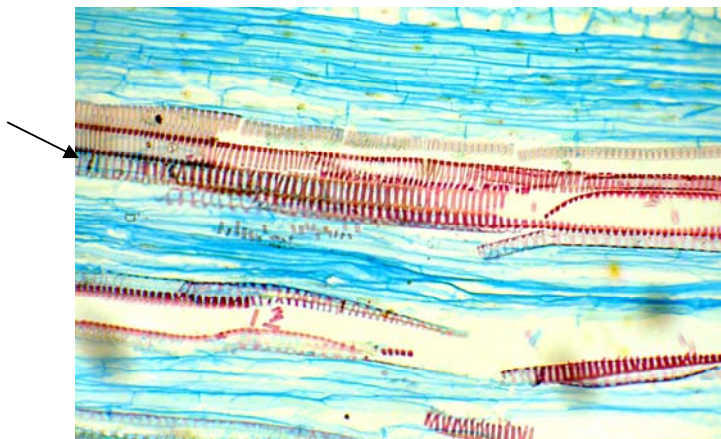


Swiss Cheese Plant – Aerial Root L.S.
Sclerenchyma Fibres



Swiss Cheese Plant - Aerial Root
Sclerenchyma Fibres T.S.

The longitudinal section also showed an abundance of spiral vessels in the vascular bundles.



Swiss Cheese Plant - Aerial Root L.S.
Spiral Vessels